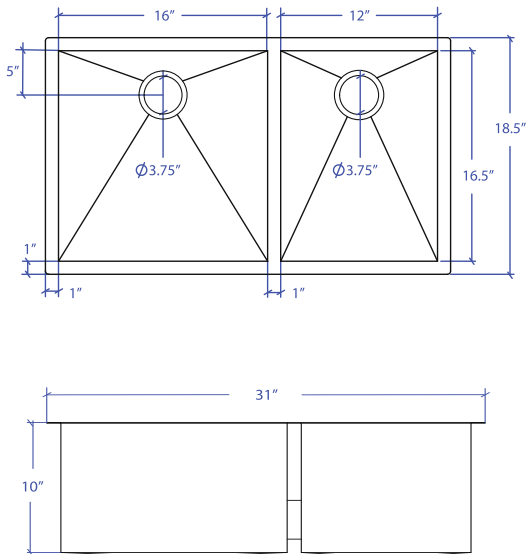


FLATIRON MUD-652SB



*Custom ADA compliant versions are available



• FEATURES

- 16-gauge type 304 stainless steel
- 90° zero radius design

• TECHNICAL INFORMATION

- External dimension: 31"Lx18.5"Wx10"D
- Basin dimensions:
Left: 16"Lx16.5"Wx10"D
Right: 12"Lx16.5"Wx10"D

• FINISHES

- Satin Brushed stainless steel

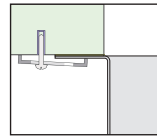
• INSTALLATION OPTIONS

- Top-mount
- Under-mount

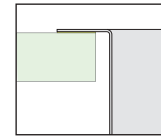
• MINIMUM CABINET SIZE (I.D.)

- Top-mount 32"
- Under-mount 34"

• DUAL-MOUNT INSTALLATION

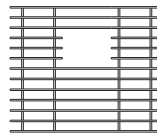


Under-mount

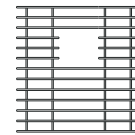


Top-mount

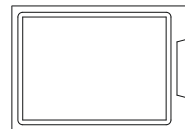
• ACCESSORY OPTIONS



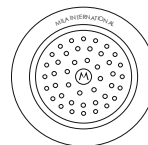
MBG-6504SB
Basin Grid



MBG-6501SB
Basin Grid



MCB-651BB
Cutting Board



MKD-101SB
Strainer

PROJECT INFORMATION

Project			
Date	/ /	QTY	
Specifier			
Contact			
Note			