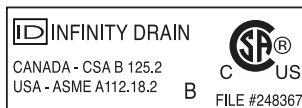


The Center Drain Series are intended for use with the following waterproofing methods:  
 ◦ Hot Mop ◦ Copper Pan ◦ CPE Rubber Liner (Chloraloy®) ◦ PVC Liner ◦ Lead Pan ◦ Fiberglass

Made in the U.S.A.



**Infinity Drain** • 145 Dixon Avenue, Amityville, New York 11701  
 Phone 516.767.6786 • Fax 516.740.3066 • [www.InfinityDrain.com](http://www.InfinityDrain.com)

Dimension are subject to Manufacturers tolerance and change without notice. We can assume no responsibility for use of superseded or void data.

Las dimensiones están sujetos a la tolerancia del fabricante y cambio sin previo aviso. No podemos asumir ninguna responsabilidad por el uso de datos a sustituir los nulos.

## Series Components:

LTD 5 Series	
LT5-2 SS	5" x 5" Strainer Only with Satin Stainless Finish
LT5-2 PS	5" x 5" Strainer Only with Polished Stainless Finish
CDI 22	Clamp Down Drain Cast Iron
CDA 22	Clamp Down Drain ABS
CDP 22	Clamp Down Drain PVC

TD 15 Series	
T15 A SS	5" x 5" Strainer Only - Satin Stainless Finish
T15 A PS	5" x 5" Strainer Only - Polished Stainless Finish
CDI 42	4" Throat x 2" Outlet Clamp Down Drain Cast Iron
CDI 43	4" Throat x 3" Outlet Clamp Down Drain Cast Iron
CDA 42	4" Throat x 2" Outlet Clamp Down Drain ABS
CDA 43	4" Throat x 3" Outlet Clamp Down Drain ABS
CDP 42	4" Throat x 2" Outlet Clamp Down Drain PVC
CDP 43	4" Throat x 3" Outlet Clamp Down Drain PVC
TKEY	Lift Out Key
HS 4	4" Hair Strainer Stainless Steel Throat

Optional Components: (Not Included)	
UCP 2	Universal 2" Clamping Plate
UCP 4	Universal 4" Clamping Plate
ERB	Eccentric Reducing Bushing 4"x2"

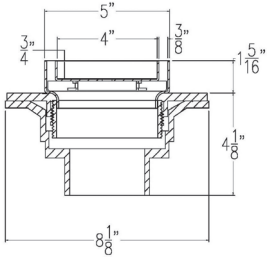
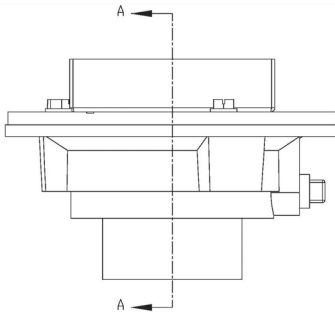
RTD 15 Series	
RT 15A	5" Round Tile Drain Strainer
CDI 42	4" Throat x 2" Outlet Clamp Down Drain Cast Iron
CDI 43	4" Throat x 3" Outlet Clamp Down Drain Cast Iron
CDA 42	4" Throat x 2" Outlet Clamp Down Drain ABS
CDA 43	4" Throat x 3" Outlet Clamp Down Drain ABS
CDP 42	4" Throat x 2" Outlet Clamp Down Drain PVC
CDP 43	4" Throat x 3" Outlet Clamp Down Drain PVC

TD 20 Series	
T20 A SS	8" x 8" Strainer Only - Satin Stainless Finish
T20 A PS	8" x 8" Strainer Only - Polished Stainless Finish
CDI 42	4" Throat x 2" Outlet Clamp Down Drain Cast Iron
CDI 43	4" Throat x 3" Outlet Clamp Down Drain Cast Iron
CDA 42	4" Throat x 2" Outlet Clamp Down Drain ABS
CDA 43	4" Throat x 3" Outlet Clamp Down Drain ABS
CDP 42	4" Throat x 2" Outlet Clamp Down Drain PVC
CDP 43	4" Throat x 3" Outlet Clamp Down Drain PVC
TKEY	Lift Out Key
HS 4	4" Hair Strainer

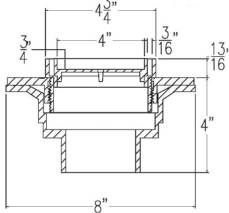
LW 5 Series	
L5-2 SS	5" x 5" Strainer Only - Satin Stainless Finish
L5-2 PS	5" x 5" Strainer Only - Polished Stainless Finish
L5-2 ORB	5" x 5" Strainer Only - Lifetime Oil Rubbed Bronze Finish
CDI 22	Clamp Down Drain Cast Iron
CDA 22	Clamp Down Drain ABS
CDP 22	Clamp Down Drain PVC

**Note:** Installer must verify all rough-in dimensions prior to installation and consult local and national codes. Conformity and compliance to local and national codes are the responsibility of the installer.

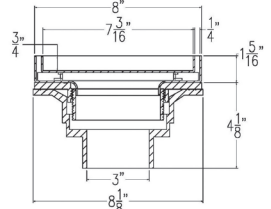
**Tenga en cuenta:** Instalador debe comprobar todas las dimensiones en las partes previa a la instalación y consultar localmente y nacionalmente los códigos. La conformidad y el cumplimiento de códigos local y nacional es responsabilidad del instalador.



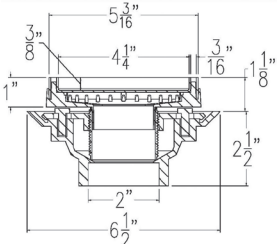
**Section A-A  
TD 15**



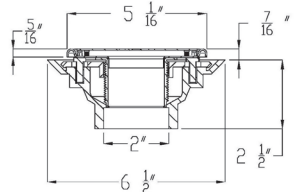
**Section A-A  
RTD 15**



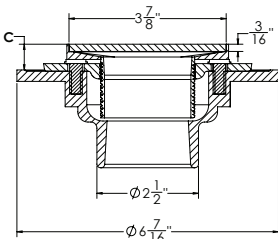
**Section A-A  
TD 20**



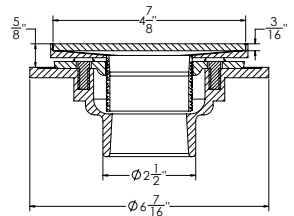
**Section A-A  
LTD 5**



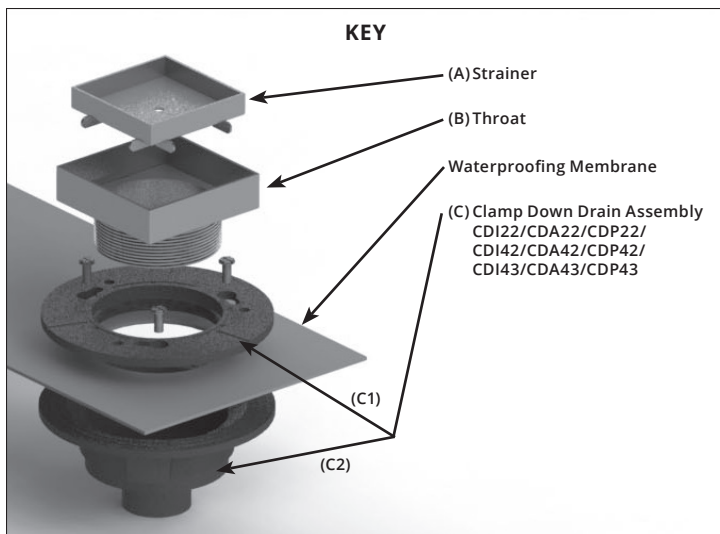
**Section A-A  
LW 5**



**Section A-A  
4" x 4" Center Drain**

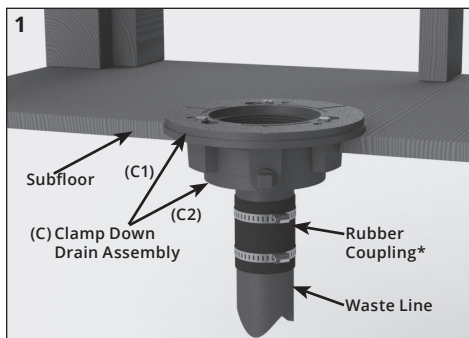


**Section A-A  
5" x 5" Center Drain**



## Installation

**1.** Connect the clamp down drain assembly (C) to existing waste line via no-hub rubber coupling, PVC cement, or ABS pipe cement and allow drain body (C2) to recess into subfloor. Ensure that drain assembly (C) is **level**. Unscrew and remove top clamp down plate (C1) from drain body (C2).

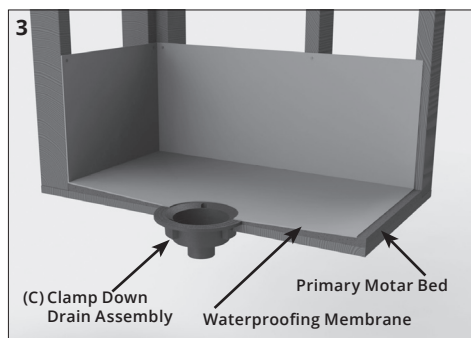


**2.** Spread a primary mortar bed across the intended shower area. Pitch this bed in four directions towards the drain body (C2).

**3.** When mortar layer is dry, perform necessary waterproofing (PVC Liner, Rubber Liner, Lead Pan, Copper Pan, Hot Mop, Fiberglass) as per local code. Ensure waterproofing layer reaches the edge of the hole in the drain body (C2).

## Instalación

**1.** Conecte la sujeción del drenaje (C) a la existente línea de desecho a través del acoplamiento de goma no-hub, cemento de PVC, o tubo de ABS de cemento y permita que la sujeción (C2) a que rebaje en el piso. Asegure que la asamblea (C) este **anivelado**. Destornillar y remueva la placa (C1) de la sujeción (C2).



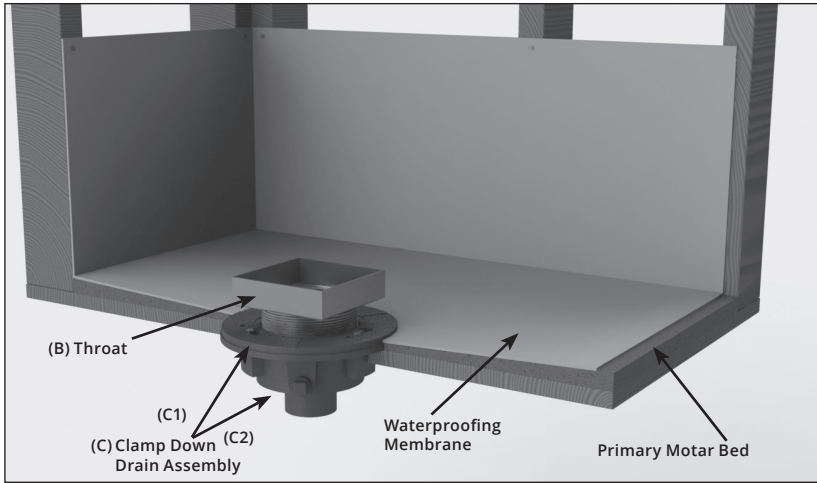
\*Not provided by Infinity Drain kits

**2.** Propagar una capa de mortero a través de la zona de ducha prevista. Bree este mortero en cuatro direcciones hacia el drenaje (C2).

**3.** Cuando el mortero este seco, realice la impermeabilización necesaria (PVC Liner, Rubber Liner, Lead Pan, Cooper Pan, Hot Mop, Fiberglass) según el código. Asegure que la capa de impermeabilización alcance el borde del agujero en el drenaje (C2).

4. Reattach the top clamp down plate (C1) to the clamp down drain body (C2) over the waterproofing layer using bolts. Thread the throat (B) of the drain into top clamp down plate (C1). Adjust to the desired height. Turn clockwise to lower, counter-clockwise to raise. When determining desired height, include thickness of mortar, thinset and finishing material.

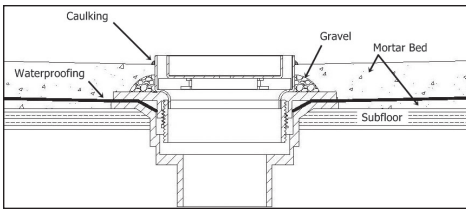
4. Vuelva a colocar la parte superior de la placa (C1) al drenaje (C2) sobre la capa de impermeabilización usando tornillos. Rosca el cuello (B) del drenaje en la placa del drenaje (C1). Ajústelo a la longitud deseada. Gire hacia la derecha para bajar, hacia la izquierda para aumentar. Al determinar la altura deseada, incluya el espesor del mortero, thinset y el material terminado.



Model	Overall Minimum Height	Overall Maximum Height*
LTD 5	1 1/8"	2 1/4"
RTD 15	13/16"	1 7/16"
TD 15	1 5/16"	2 1/16"
TD 20	1 5/16"	2 1/16"
WW 5	3/4"	1 3/4"
LW 5	7/16"	1 7/16"
Center Drain	5/8"	1 5/8"
Center Drain - High Flow	5/8"	1 5/8"

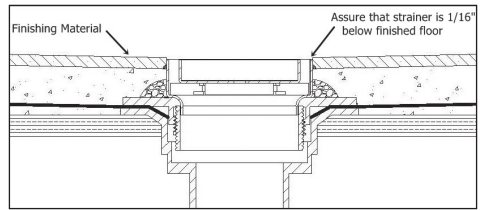
5. Using desired floor material, mark the thickness of the material along the outside of the throat (B), so that it will finish 1/16" above the channel. Lay gravel or other porous substrate over weep holes of the top clamp down plate (C1). Spread a final mortar bed up to the marked thickness, less the thickness of thinset. Pitch this bed in all directions toward the center drain. Once dry, apply a bead of silicone caulk around the throat (B). Lay thinset and finishing material. Have material finish to the edge of the throat (B). **DO NOT** allow finishing material to finish on top of the stainless steel channel edge.

5. Usando el material deseado, marque el espesor del material a lo largo de la parte afuera del cuello (B), para que termine 1/16" arriba del canal. Coloque grava u otro sustrato poroso sobre los orificios de drenaje (C1). Propague un mortero hasta el espesor marcado, menos del espesor del thinset. Bree esto en cuatro direcciones hacia el centro drenaje. Una vez que este seco, aplique un cordón de silicona alrededor de cuello (B). Coloque thinset y material terminado al borde superior del cuello (B). **NO PERMITA** que el material terminado termine encima del canal de acero inoxidable.



**Before finishing material**

**Antes que el material esté terminado**



**After finishing material**

**Después que el material esté terminado**

**6. LTD 5/RTD 15/TD15/TD20 SERIES ONLY:** Spread a layer of mortar into the strainer (A), allowing for thinset and finishing material to finish 1/16" above the metal frame. Allow to dry, spread thinset and lay material. Place top strainer (A) into the throat (B) of the drain.

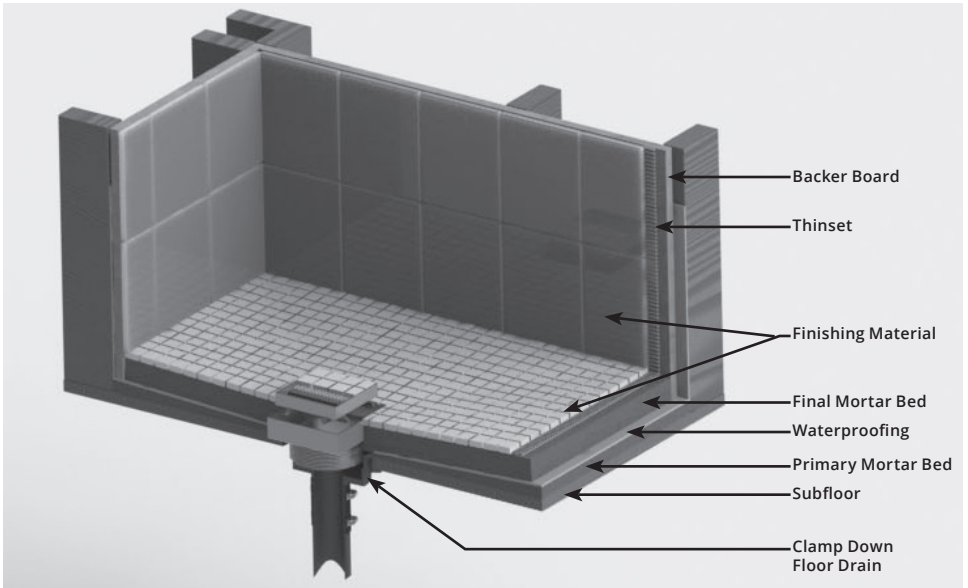
**6. LTD 5/RTD 15/TD15/TD20 SOLAMENTE:** Propagar una capa de mortero en el strainer (A), permitiendo el thinset y material terminado que termine 1/16" por encima de la estructura de metal. Permita que se seque, propagar thinset y tender el material. Coloque la parte superior (A) en el cuello (B) del drenaje.

**LW 5 SERIES:** Place the strainer (A) into the throat (B) and fasten using screws at each corner.

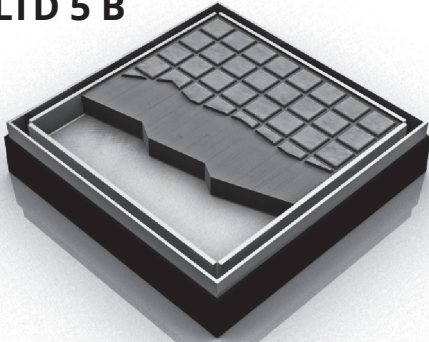
**LW 5 SERIE:** Coloque el strainer(A) en el cuello (B) y sujetar con tornillos en cada esquina.

**MUD GUARD:** Drill a 1" hole in the marked location of the factory installed mudguard. Place your finger into the hole and pull out. Place the magnetic G-Series strainer (A) into the throat (B) (Each sold separately)

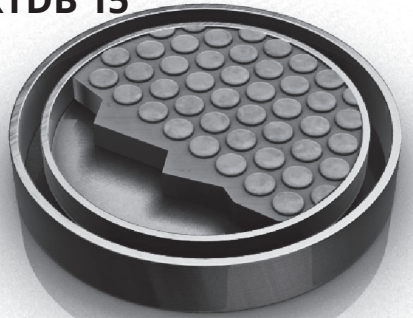
**MUD GUARD:** Perfore 1" agujero en la locación marcada del guardabarros que está instalado. Coloque su dedo en el agujero y retírelo. Coloque el magnético G-serie (A) en el cuello (B) (Cada uno se vende separado)



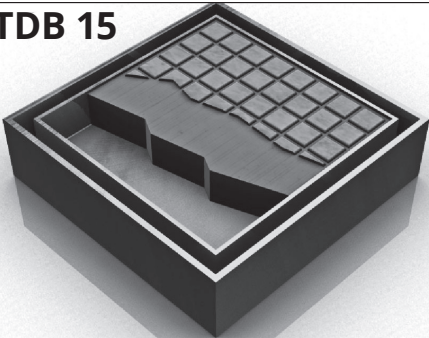
**LTD 5 B**



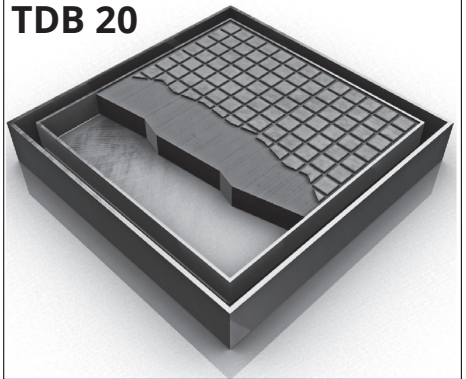
**RTDB 15**



**TDB 15**



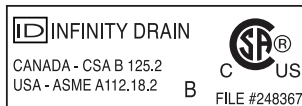
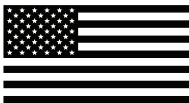
**TDB 20**



The Bonded Flange Center Drain Series are intended for use with the following waterproofing methods:

- Liquid Waterproofing
- Fabric Waterproofing

Made in the U.S.A.



**Infinity Drain** • 145 Dixon Avenue, Amityville, New York 11701  
Phone 516.767.6786 • Fax 516.740.3066 • [www.Infinitydrain.com](http://www.Infinitydrain.com)

Dimension are subject to Manufacturers tolerance and change without notice. We can assume no responsibility for use of superseded or void data.

Las dimensiones están sujetos a la tolerancia del fabricante y cambio sin previo aviso. No podemos asumir ninguna responsabilidad por el uso de datos a sustituir los nulos.

# Series Components:

## LTD 5 B Series

LT5-2 SS	5" x 5" Strainer Only with Satin Stainless Finish
LT5-2 PS	5" x 5" Strainer Only with Polished Stainless Finish
BFA 22	Bonded Flange ABS Drain
BFP 22	Bonded Flange PVC Drain

## RTDB 15 Series

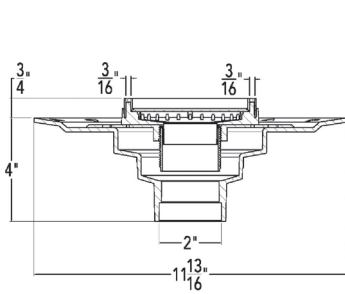
RT 15 B	5" Round Tile Drain Strainer
BFA 42	Bonded Flange ABS Drain
BFP 42	Bonded Flange PVC Drain

## TDB 15 Series

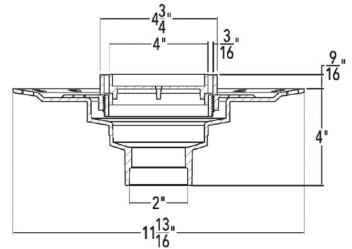
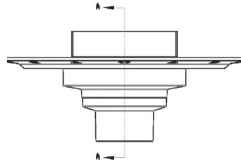
T15 A SS	5" x 5" Strainer Only with Satin Stainless Finish
T15 A PS	5" x 5" Strainer Only with Polished Stainless Finish
BFA 42	Bonded Flange ABS Drain
BFP 42	Bonded Flange PVC Drain
TKEY	Lift Out Key
HS 4	4" Hair Strainer

## TDB 20 Series

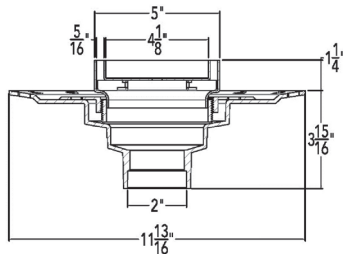
T20 A SS	8" x 8" Strainer Only with Satin Stainless Finish
T20 A PS	8" x 8" Strainer Only with Polished Stainless Finish
BFA 42	Bonded Flange ABS Drain
BFP 42	Bonded Flange PVC Drain
TKEY	Lift Out Key
HS 4	4" Hair Strainer



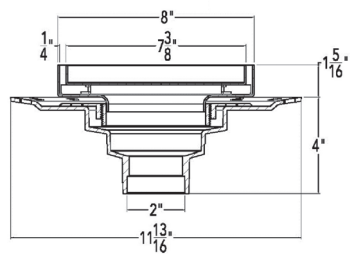
**Section A-A**  
**LTD 5 B**



**Section A-A**  
**RTDB 15**



**Section A-A**  
**TDB 15**

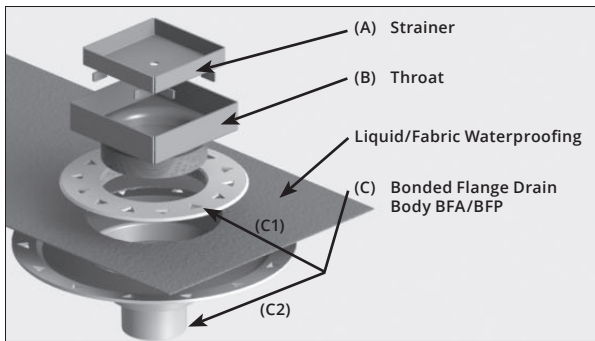


**Section A-A**  
**TDB 20**

**Note:** Installer must verify all rough-in dimensions prior to installation and consult local and national codes. Conformity and compliance to local and national codes are the responsibility of the installer.

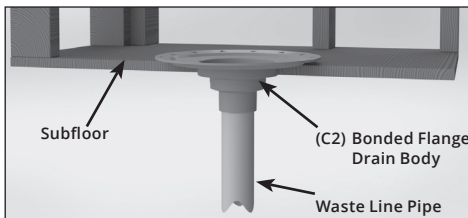
**Tenga en cuenta:** Instalador debe comprobar todas las dimensiones en las partes previa a la instalación y consultar localmente y nacionalmente los códigos. La conformidad y el cumplimiento de códigos local y nacional es responsabilidad del instalador.





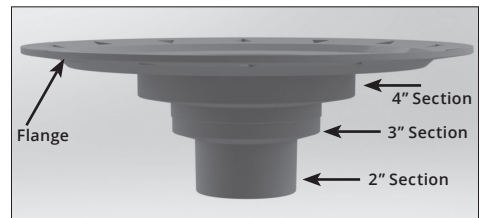
## Installation

1. Set bonded flange into a wet pre laid bed of mortar and allow bonded flange drain body (C) to recess into subfloor. Connect the drain body (C) to existing waste line using PVC cement or ABS pipe cement. If no access to drain pipe is available from below, prep outlet of the bonded flange (C) with PVC or ABS primer and cement and push fit into existing waste line as you set the bonded flange into the mortar. Ensure that drain assembly (C) is **level**. Remove top threaded ring (C1) from drain body (C2).



## Instalación

1. Coloque bonded flange en el húmedo pre-establecido de mortero y permita el drenaje de bonded flange (C) que rebaje en el subsuelo. Conecte el drenaje (C) a la actual línea de desecho usando cemento de PVC o cemento de tubería de ABS. Si no hay acceso al tubo de desagüe de abajo, preparar la salida del bonded flange en el mortero. Asegure que la ensamble para desagüe (C) este **nivelado**. Elimine la parte superior del anillo roscador (C1) del desagüe (C2).



**Note:** The outlet of the bonded flange drain body (C2) can be made to be used with a 2", 3" OR 4" waste line by cutting the outlet section down to the desired section size.

**Tenga en cuenta:** La salida del bonded flange desagüe (C2) se puede hacer para ser utilizado con 2", 3" U 4" línea de desechos cortando la sección de salida al tamaño de la sección deseada.

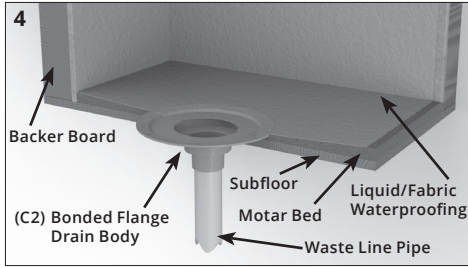
2. Install backer board, cement board, or other desired backing material on to framed walls as per local code.

2. Instale los paneles, tablero de cemento, u otro material de soporte deseada a los marcos de paredes según las normas locales.

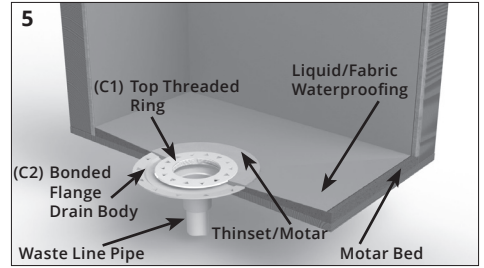
3. Spread a mortar bed across the intended shower area. Ensure the starting height of the mortar bed at the drain is flush with the flange of the drain body (C2) at the drain. Pitch this mortar bed in four directions towards the drain body (C2).

3. Propagación el mortero a través de la zona de ducha prevista. Asegure que la altura inicial del mortero en el drenaje este a ras con el desagüe (C2). Inclina esta capa de mortero en cuatro direcciones hacia el cuerpo de desagüe (C2).

4. When mortar layer is dry, perform necessary waterproofing (Liquid /Fabric Waterproofing) as per local code. Ensure waterproofing layer reaches the edge of the hole in the drain body (C2).



4. Cuando el mortero este seco, realice necesario impermeabilización (Líquida/ Tela impermeabilización) según las normas locales. Asegure que la capa de impermeabilización alcance el borde del agujero en el cuerpo del desagüe (C2).



5. Set top threaded ring (C1) onto the bonded flange drain body (C2) using thinset and position to desired location within the drain body (C2).

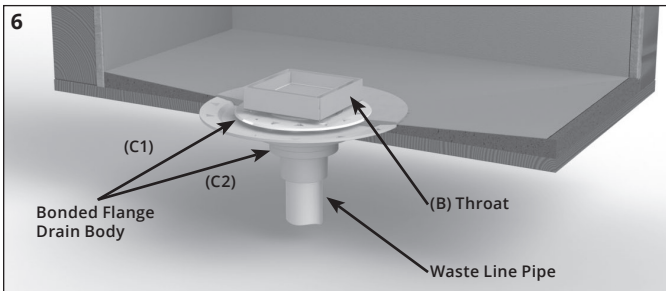
5. Fijar la parte superior roscada (C1) en el bonded flange desagüe (C2) usando thinset y posicónelo a la ubicación deseada dentro del desagüe (C2).

**Note:** When overall build up greater than ¼" above waterproofing is needed (excluding finished floor material thickness) use mortar to set top threaded ring (C1).

**Tenga en cuenta:** Cuando construya más que ¼" arriba impermeabilización es necesaria (excluyendo material de piso terminado) Utilice mortero para fijar el anillo roscado.

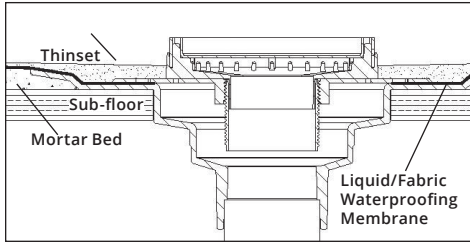
6. Once the thinset/mortar is dry, thread the throat (B) into top threaded ring (C1). Adjust to the desired height. Turn clockwise to lower, counter-clockwise to raise. When determining desired height, include thickness of thinset and finishing material.

6. Una vez el thinset/mortero este seco, rosca el cuello (B) en la parte superior del anillo roscado (C1). Ajustar a la altura deseada. Gire hacia la derecha para bajar, hacia la izquierda para subir. Cuando determine la altura, incluya espesor del thinset y material terminado.



Model	Overall Minimum Height	Overall Maximum Height*
LTD 5 B	1"	2"
RTDB 15	1 3/16"	1 7/16"
TDB 15	1 5/16"	1 15/16"
TDB 20	1 5/16"	2 1/16"

7. Using desired floor material, mark the thickness of the material along the outside of the throat (B), so that it will finish 1/16" above the channel. Spread thinset/mortar bed up to the marked thickness. Ensure this bed is pitched all directions toward the center drain. If using a mortar build up, apply a bead of silicone caulk around the throat after mortar is dry. Lay finishing material, and have material finish to the edge of the throat (B). **DO NOT** allow finishing material to finish on top of the stainless steel channel edge.



Before finishing material

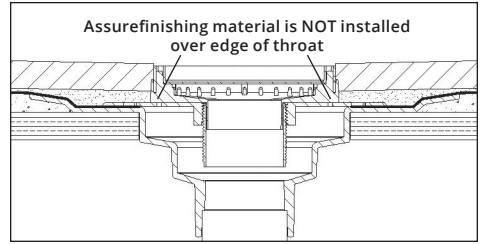
Antes que el material esté terminado

8. Remove the strainer (A) from the throat (B).

**LTDB 5:** Set finishing material of a thickness up to 3/8" directly into strainer using thinset.

**RTDB15/TDB15/TDB20:** Set finishing material of a thickness 3/4" directly into strainer using thinset. If finishing material is less than 3/4", spread a layer of mortar into the top frame of the strainer (A), allowing for thinset and finishing material to finish 1/16" above the metal frame. Allow to dry, spread thinset and lay material. Place top frame of strainer (A) back into the throat (B).

7. Usando el material del suelo deseado, marque el espesor del material a lo largo de la parte exterior del el cuello (B), de modo que termine 1/16" arriba del canal. Propagación thinset/mortero hasta el espesor marcada. Asegure que esto esté lanzado en todas las direcciones hacia el drenaje del centro. Si se construye mortero, aplique un cordón de silicona alrededor del cuello después del mortero cuando este seco. Coloque material terminado, y tenga el material hasta el borde de cuello (B). **NO PERMITA** que el material termine en la parte superior del borde del canal de acero.



After finishing material

Después que el material esté terminado

8. Remueva la parte (A) del cuello (B).

**LTDB 5:** Coloque el material terminado al espesor de 3/8" directamente en la parte (A) usando thinset.

**RTDB15/TDB15/TDB20:** Coloque material terminado al espesor de 3/4" directamente a la parte (A) usando thinset. Si el material esta menos de 3/4", propagación una capa de mortero en el marco superior de la parte (A), permitiendo que el thinset y el material esté terminado a 1/16" arriba en el marco. Permita que se seque, propagación thinsey y colocar el material. Coloque el marco de la parte (A) de regreso al cuello (B).

